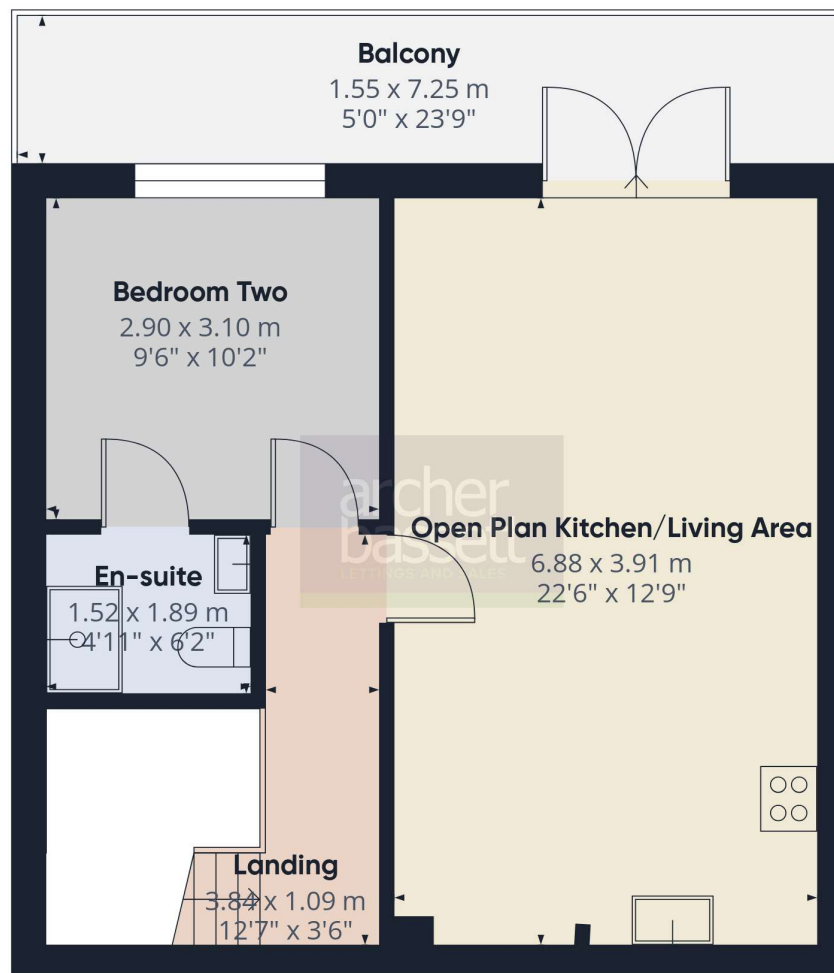


Ground Floor



Floor 1

Approximate total area⁽¹⁾

88.3 m²

951 ft²

Balconies and terraces

11.2 m²

121 ft²

Reduced headroom

1.4 m²

15 ft²

(1) Excluding balconies and terraces

Reduced headroom

Below 1.5 m/5 ft

Calculations reference the RICS IPMS 3C standard. Measurements are approximate and not to scale. This floor plan is intended for illustration only.

GIRAFFE360